



Lakes Blue Energy

Presentation to Annual General Meeting

Roland Sleeman, CEO

25 November 2022

ersonal use only

Cautionary Statement



This presentation has been prepared by Lakes Blue Energy NL ('Lakes Blue Energy', 'LKO' or 'Company'). By accessing this presentation you acknowledge that you have read and understood the following statement.

Cautionary Statement

The Company is not aware of any new information or data that materially affects the information included in this presentation and confirms that all the material assumptions and technical parameters underpinning the estimates in this presentation continue to apply and have not materially changed. The estimated quantities of petroleum that may potentially be recovered by the application of a future development project(s) relate to undiscovered accumulations. These estimates have both an associated risk of discovery and a risk of development. Further exploration appraisal and evaluation is required to determine the existence of a significant quantity of potentially moveable hydrocarbons.

No Representation, Warranty or Liability

Whilst it is provided in good faith, no representation or warranty is made by LKO or any of its advisers, agents, directors or employees as to the accuracy, completeness, currency or reasonableness of the information in this presentation or provided in connection with it, including the accuracy or attainability of any Forward Looking Statements set out in this presentation. LKO does not accept any responsibility to inform you of any matter arising or coming to LKO's notice after the date of this presentation which may affect any matter referred to in this presentation. Any liability of LKO, its advisers, agents, directors and employees to you or to any other person or entity arising out of this presentation including pursuant to common law, the Corporations Act 2001 and the Trade Practices Act 1974 or any other applicable law.

Future Performance

Certain statements contained in this presentation, including information as to the future financial or operating performance of LKO and its projects, are forward-looking statements. Such forward-looking statements: are necessarily based upon a number of estimates and assumptions that, whilst considered reasonable by LKO; are inherently subject to significant technical, business, economic, competitive, political and social uncertainties and contingencies; involve known and unknown risks and uncertainties that could cause actual events or results to differ materially from estimated or anticipated events or results reflected in such forward-looking statements; and may include, among other things, statements regarding targets, estimates and assumptions in respect of oil and gas production and prices, operating costs and results, capital expenditures, resources and recovery rates, and are or may be based on assumptions and estimates related to future technical, economic, market, political, social and other conditions. LKO disclaims any intent or obligation to update publicly any forward-looking statements, whether as a result of new information, future events or results or otherwise. The words "believe", "expect", "anticipate", "indicate", "contemplate", "target", "plan", "intends", "continue", "budget", "estimate", "may", "will", "schedule" and other similar expressions identify forward-looking statements. All forward-looking statements made in this presentation are qualified by the foregoing cautionary statements. Investors are cautioned that forward-looking statements are not guarantees of future performance and accordingly investors are cautioned not to put undue reliance on forward-looking statements due to the inherent uncertainty therein.

2021/22: Year in Review



Victorian
exploration ban
lifted
1 July 2021

Wellesley-2 well
drilled in
Queensland

2021 AGM
(25 March 2022)

Enterprise North
Prospect identified
in Otway Basin, Vic.

Work under way to
resume exploration
in Victoria

Successful capital
raising (\$6.5m)

LKO Shares
reinstated to trading
7 February 2022

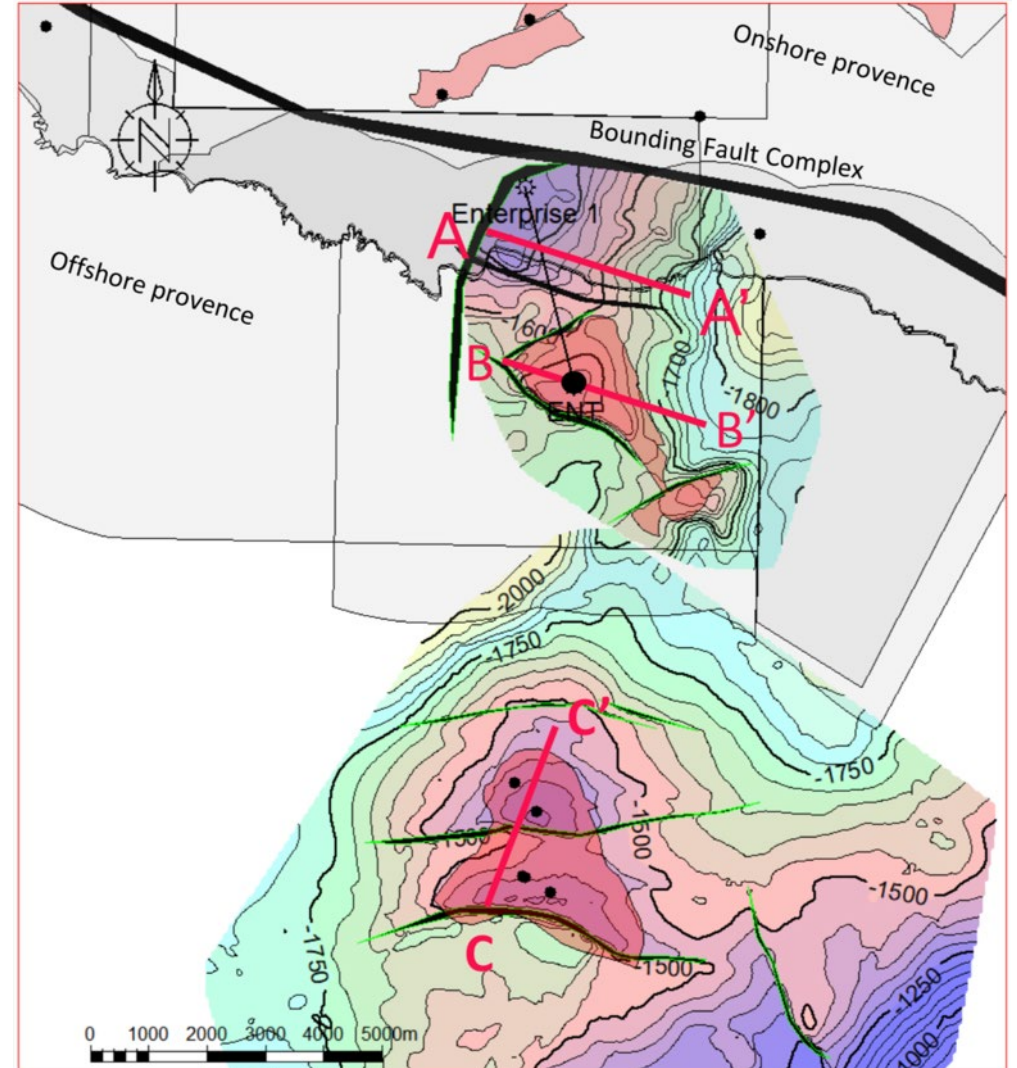
PNG: Technical
Cooperation
Agreement with
TotalEnergies

PNG rock and fluid
sampling program
successfully
completed

ersonal use only

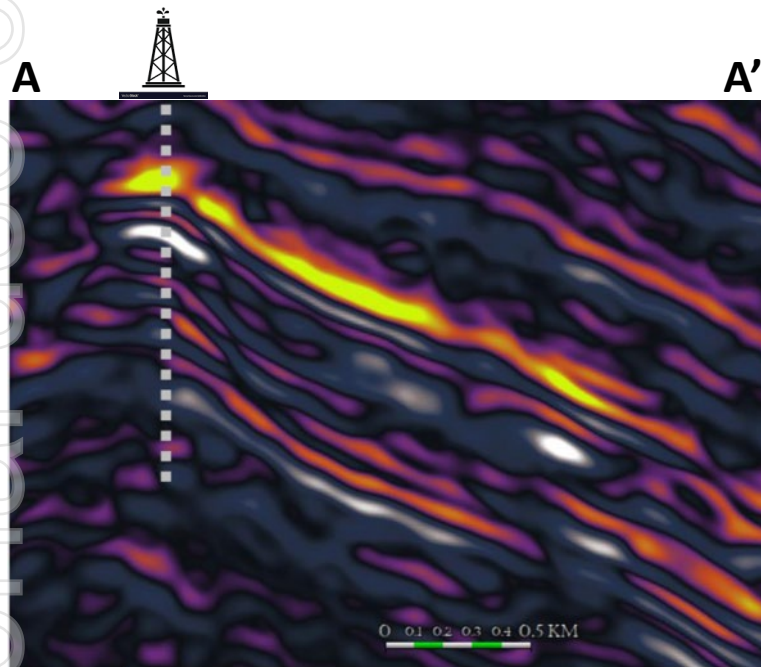
Enterprise North Prospect Identified

- Prospect identified through reinterpretation of merged 3D seismic, calibrated to known offshore fields.
- Advantageous onshore location within PEL 169 (49% Lakes; 51% Armour Energy), close to existing infrastructure.
- Very large, low-risk prospect, targeting the highly productive Waarre Sandstone Formation:
 - Up to 97 Bcf recoverable gas (net LKO).
 - Up to 2.4 MMBbl recoverable condensate (net LKO).
 - Prognosed 72% chance of geological success.
- Prioritised for pursuit given size, chance of success and cost.
- Approvals processes underway for Enterprise North 1 well.

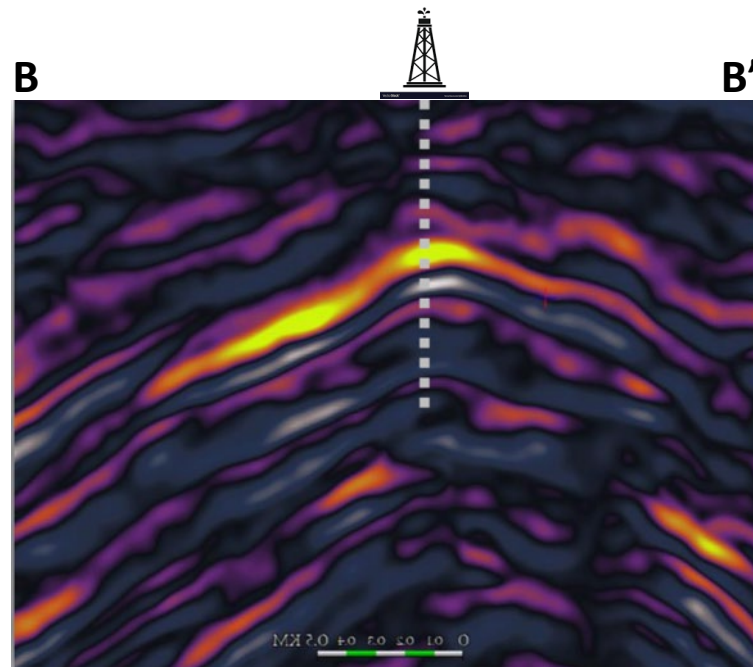


Enterprise North – Comparatives

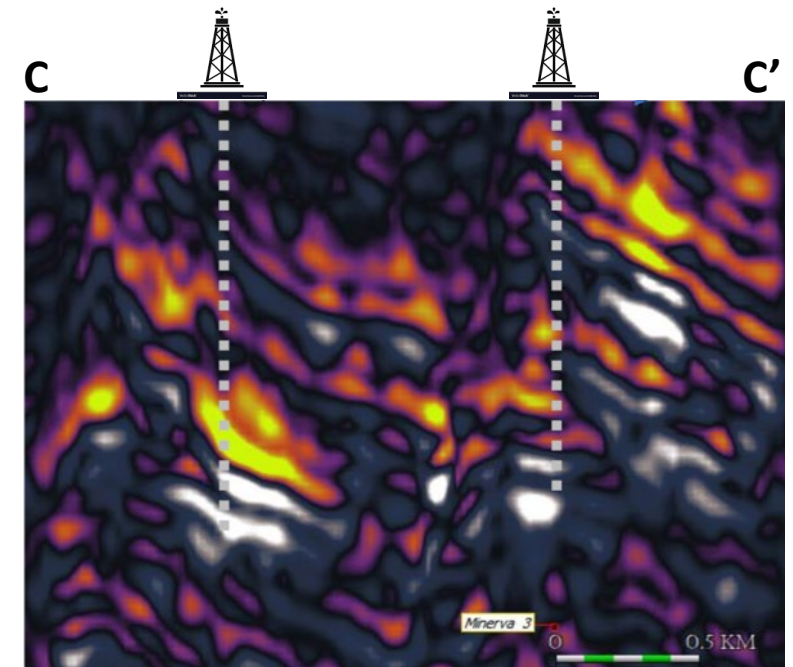
- On trend with, and with seismic amplitude similar to, the Enterprise and Minerva gas fields
- Interpreted gas-charged sands cause bright amplitude anomaly on seismic.



Enterprise North



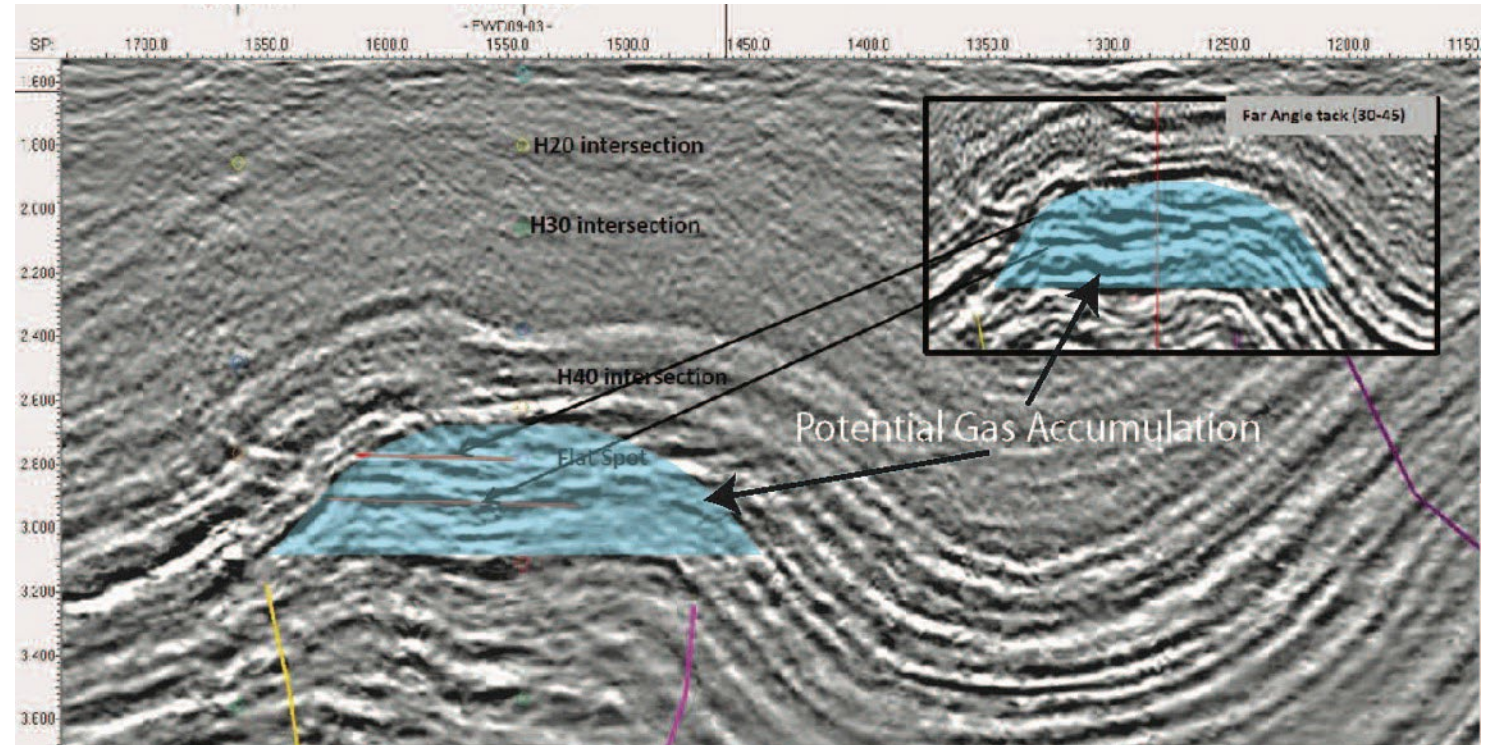
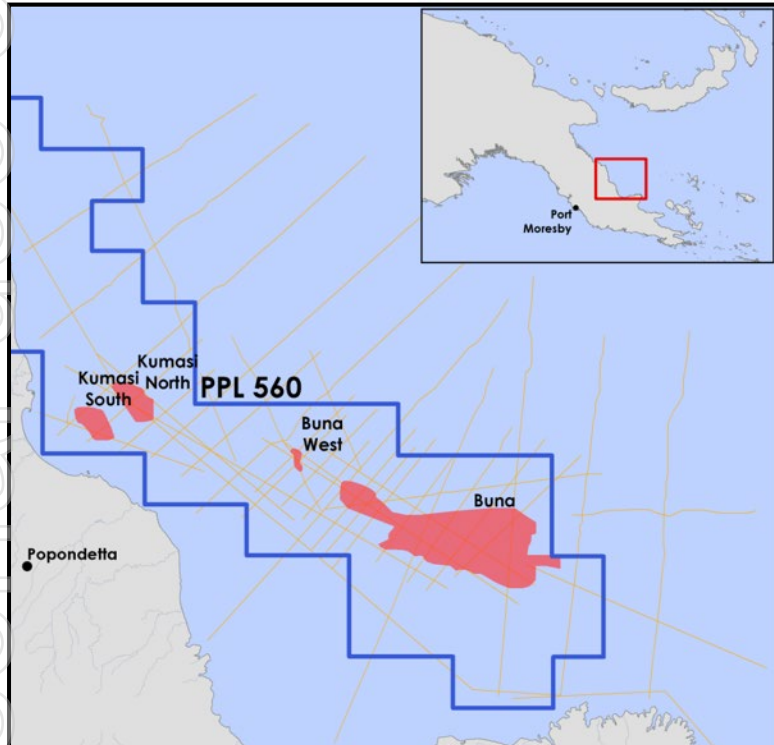
Enterprise



Minerva

PNG: PPL 560 - Buna Prospect

- Buna Prospect (PPL 560), offshore shallow water, has 3.3 Tcf prognosis.
- Seismic flat spots indicate gas liquid contact.



ersonal use only

PNG: PPL 560 – Technical Collaboration Agreement



- **Technical Collaboration Agreement ('TCA') in place with French Major, TotalEnergies.**
- **TCA involves:**
 - **Phase A – rock and fluid sampling by Lakes (already completed), geological and geophysical studies by TotalEnergies.**
 - **Phase B – upon completion of phase A TotalEnergies has option at its cost to acquire seismic to delineate the Buna Prospect.**
 - **Phase C – if Phase B is completed, TotalEnergies has option to acquire 75% interest in PPL560 by funding first US\$30m of the cost of drilling an exploration well within the permit area.**
- **Lakes retains 25% ownership of PPL 560.**
- **Total is developing the 5.4 million tonnes per annum Papua LNG Project, with startup envisaged in 2027.**

Personal use only

PNG: PPL 560 – Rock and Fluid Sampling

- Rock and fluid sampling program successfully completed in October 2022.
- 46 rock outcrop samples, 9 sediment samples, 6 gas samples and 6 liquid samples collected.



Gas sample collection



Field-test of gas bubbling from reservoir



Oil sample from oil seep

ersonal use only

Aim to Commercialise Victorian Gas Resource

Working to Secure Approvals for Multiple Exploration Wells across Victorian Permit Areas

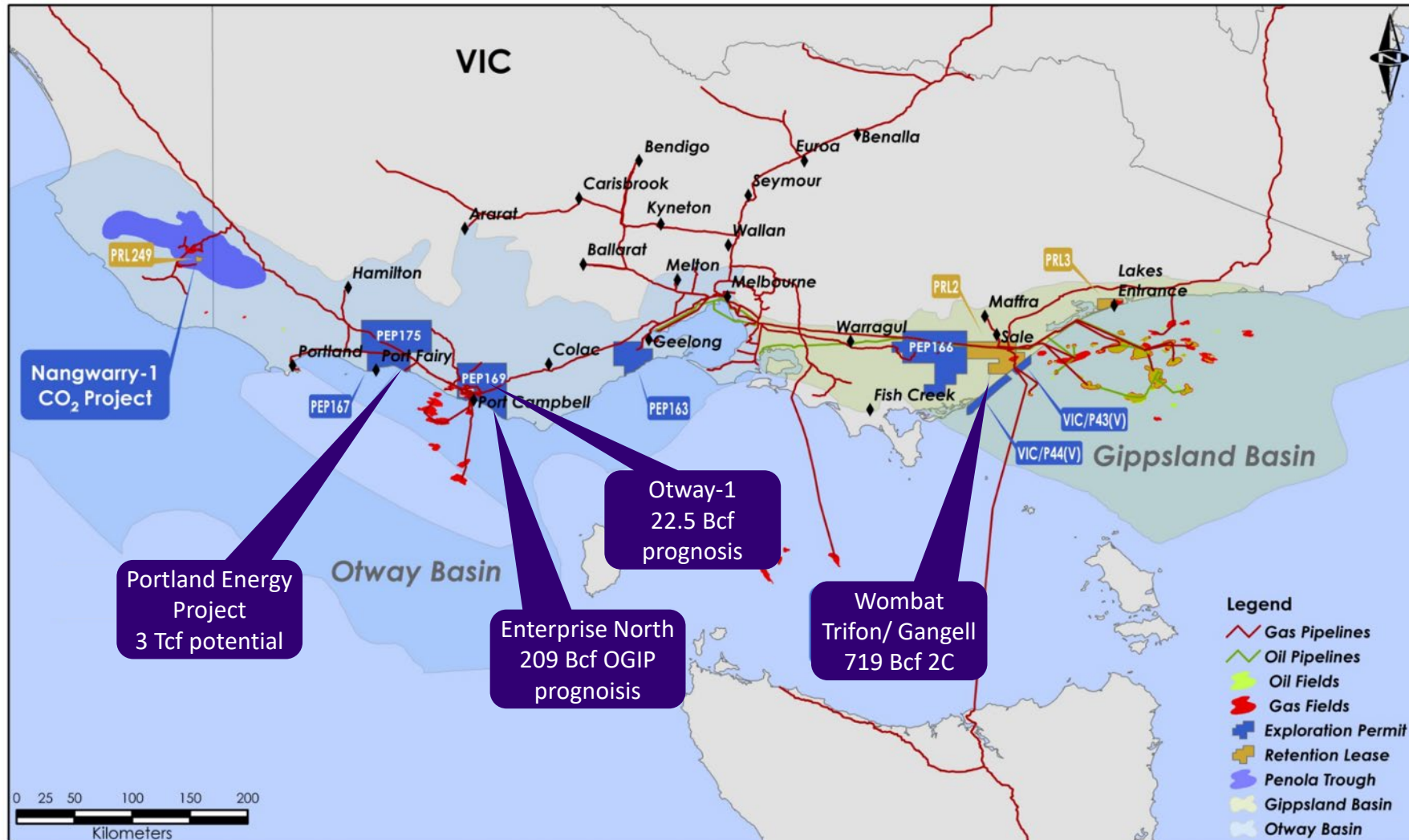
Exploring funding options, including Farmouts

Exploration Drilling Activity to Resume as Soon as Approvals are Secured and Equipment Available

Seek to Advance PNG interest (with TotalEnergies) and South Australian Interests

Continue to Monitor Sustainable Energy Opportunities

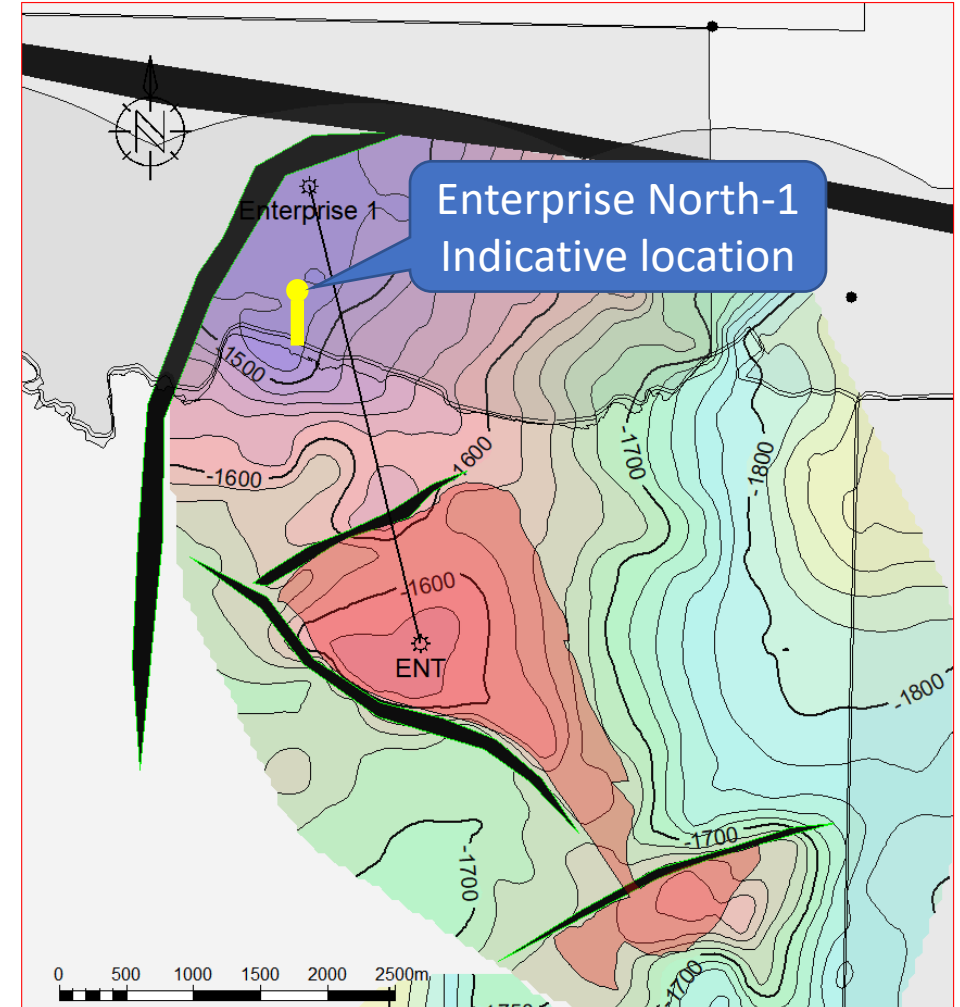
Victoria Exploration Focus



ersonal use only

Enterprise North-1 Gas Well

- Located within PEP 169 (49% LKO).
- Deviated well design, from private property to target location.
- Access and Approvals processes underway.
- Well drilling cost estimate ~\$4m (LKO share \$2m) highly dependent upon rig mobilisation costs.



| Risk Assessment | |
|-----------------|------------------------------|
| Risk | Chance of Geological Success |
| Closure | 95% |
| Reservoir | 95% |
| Seal | 80% |
| Charge | 100% |
| Overall | 72% |

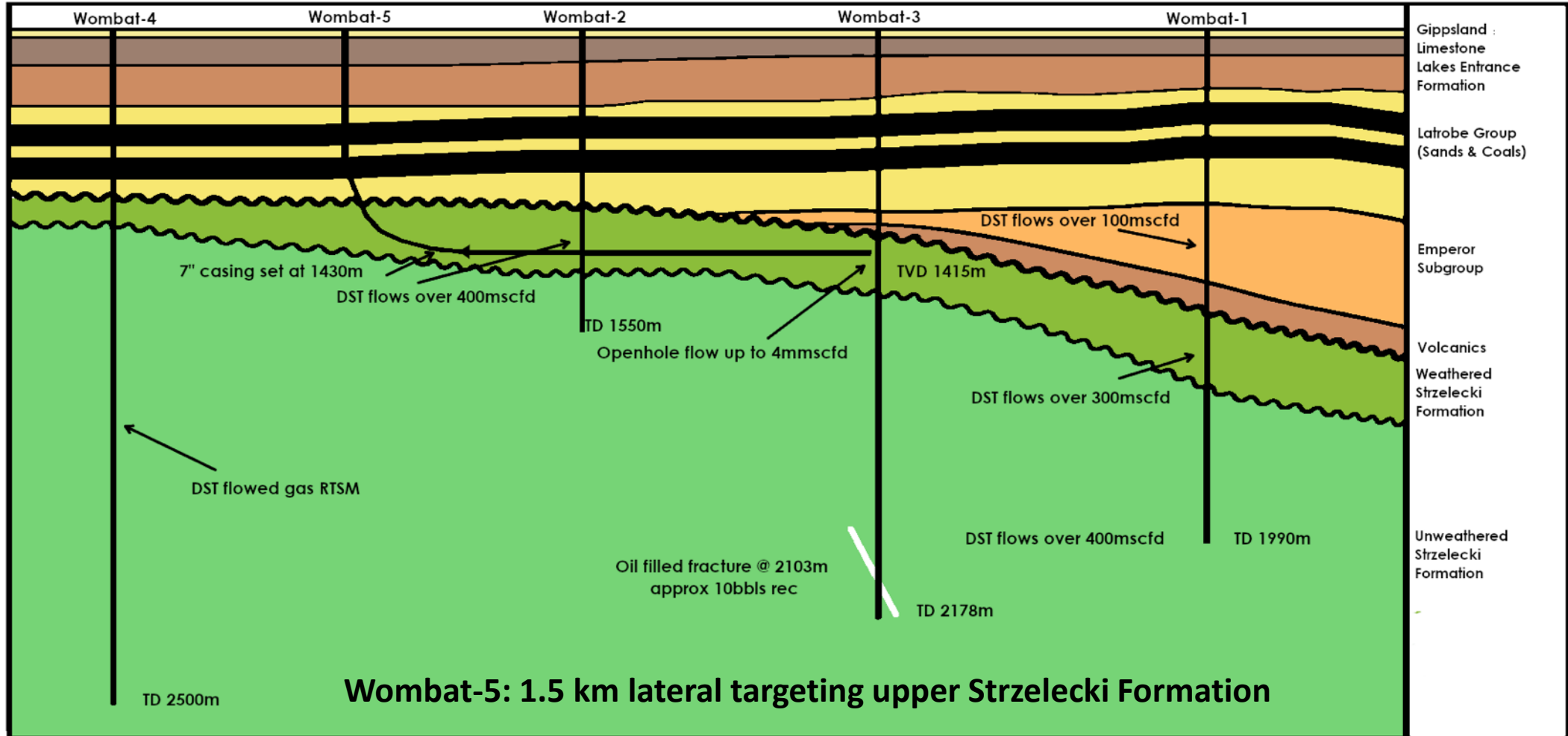
ersonal use only

Wombat Gas Field

- **Certified Contingent (2C) gas resources:**
 - Wombat field – 329 Bcf.
 - Trifon/Gangell field – 390 Bcf (223 Bcf net to LKO).
- **Wombat-5 well.**
 - Conventional, lateral gas well.
 - Estimated 10 TJ/d potential.
 - Approvals process underway.
- **Development concept:**
 - Integrated Wombat – Trifon/Gangell development.
 - Fields are close to existing infrastructure.
 - Target 20 PJ/a for 20 years (10% of Victorian demand).
 - Independent research points to LKO value uplift.



Wombat-5 Gas Well



ersonal use only

Otway-1 Gas Well

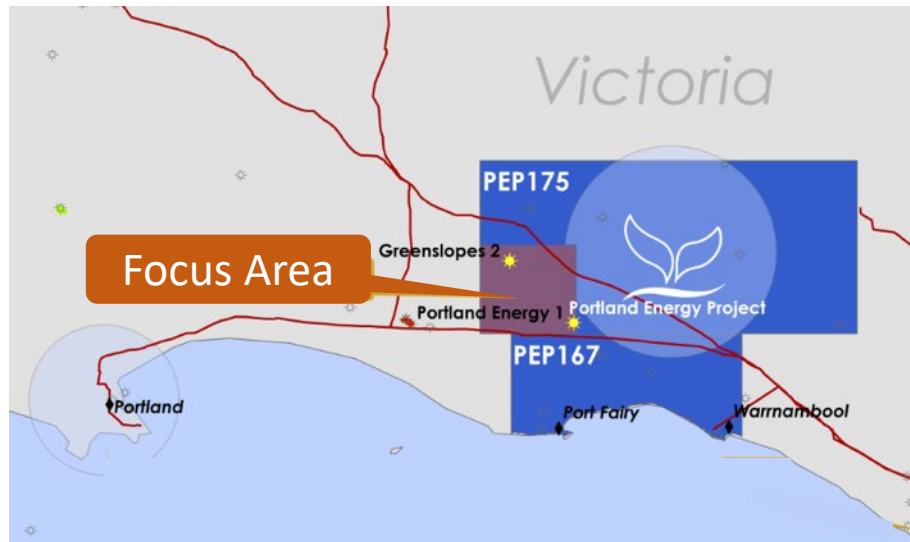
- Located within PEP 169 (49% LKO).
- Potentially drilled in campaign with Enterprise North-1 well.
- Approval process underway.
- Conventional vertical well, adjacent to Iona Gas Storage.
- Targets 3 distinct reservoirs.
 - Pebble Point Sandstone, 0.37 MM Bbl oil
 - Waarre 'C' Sandstone, 5.3 Bcf
 - Eumeralla Formation, up to 50 Bcf.
- Eumeralla flowed up to 7.5 MMcfd at nearby Skull Creek-1.



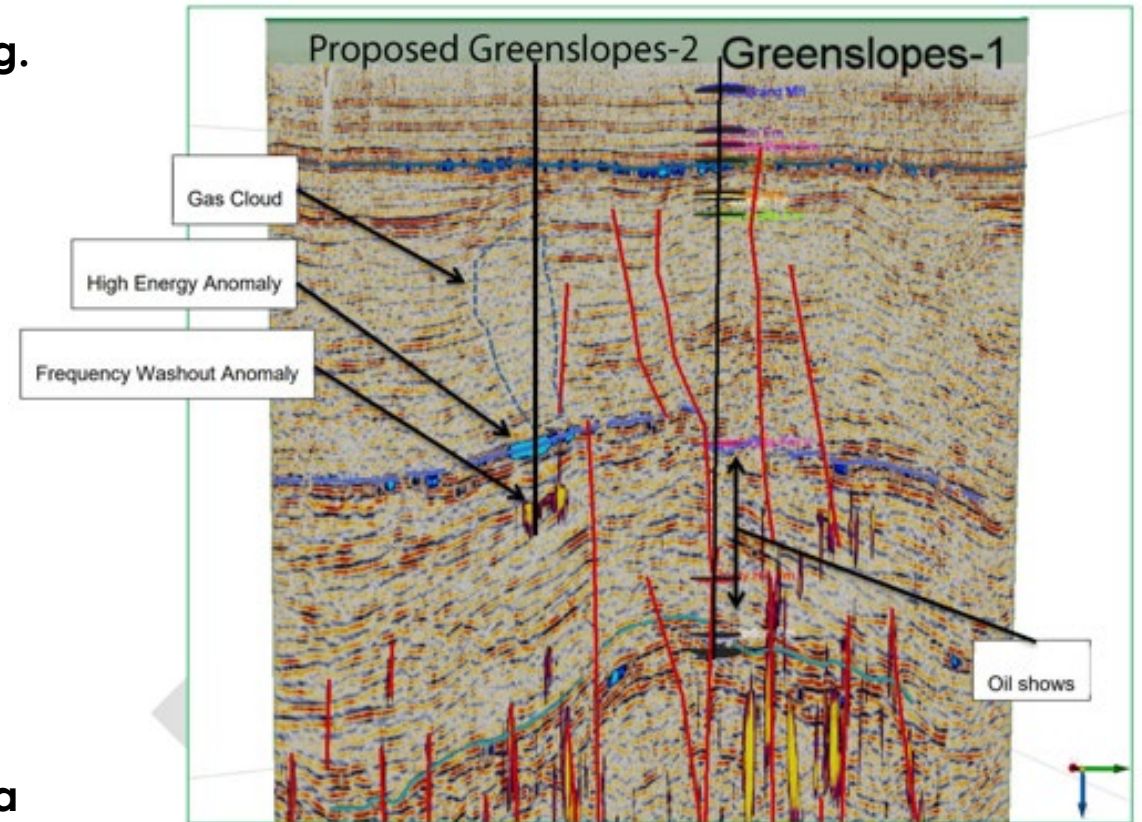
ersonal use only

Portland Energy Project

- Project 'Focus Area' in SW corner of PEP 175 (100% LKO)
- 3 Tcf conventional gas resource defined by SRK Consulting.

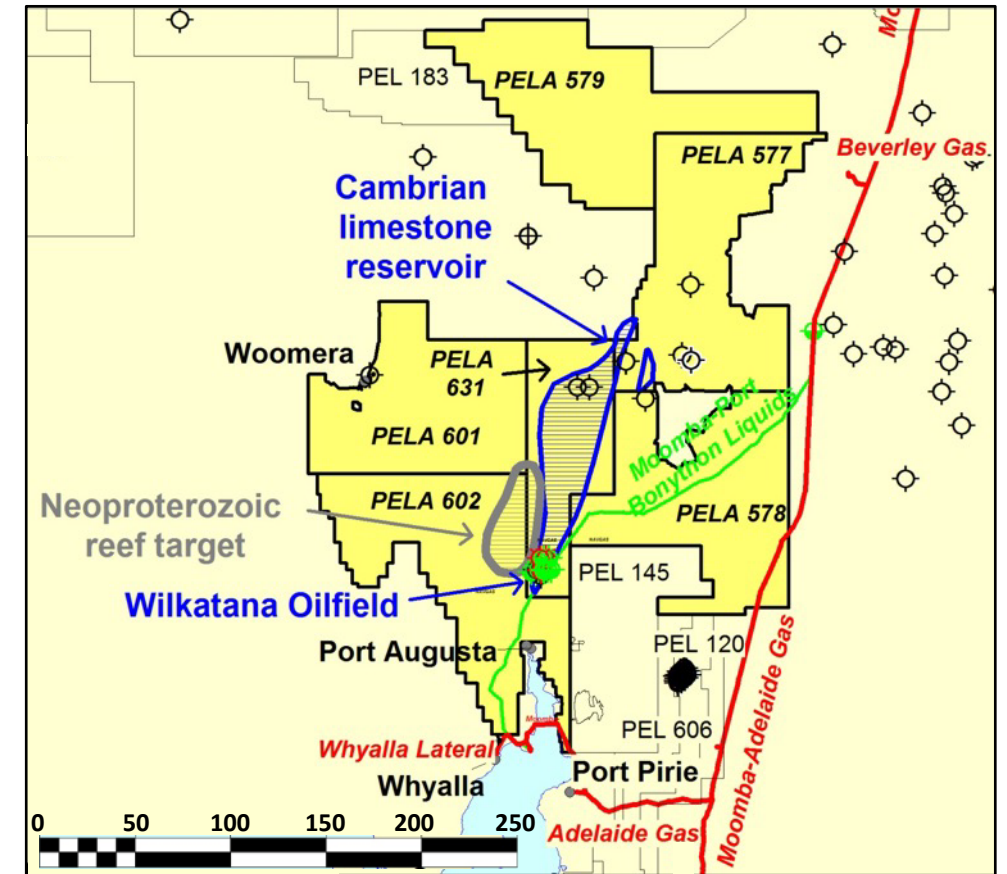
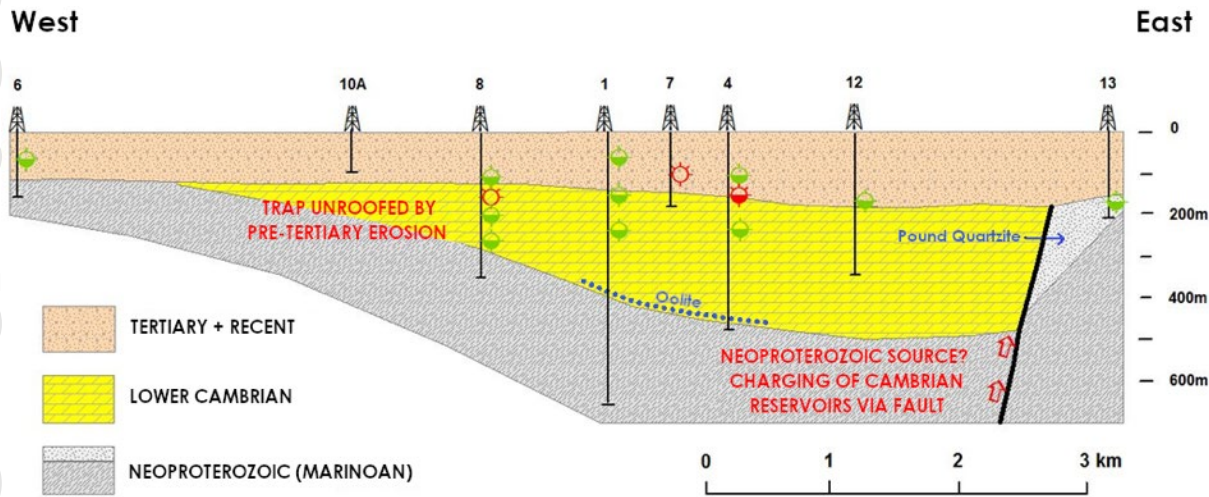


- Greenslopes-2 and Portland Energy-1 conventional wells proposed to confirm gas production potential of Eumeralla Formation.



South Australia – Arrowie Basin

- Six 100% owned PEL applications covering 53,000 sq-km.
- Hydrocarbon potential confirmed by Santos at Wilkatana.
- Objective to have PELs granted and to investigate Cambrian – Proterozoic mega field potential.



ersonal use only

The Lakes Blue Energy Opportunity

- Significant Onshore Conventional Victorian Gas Opportunities being Pursued
- All Opportunities Can be Brought to Market Quickly
- Eastern Australian Gas Market is Suffering Supply Shortfalls and Very High Prices
- Onshore Conventional is Much Lower Cost than Offshore or Distant Resources
-  Points to Potential for Significant Transformative Upside

ersonal use only

Sources of Resource Estimates

Enterprise North

Resource estimates have been prepared by Mr John Mackintosh, Reservoir Engineering Advisor, DGR Global Limited. Mr Mackintosh has over 25 years of diverse oil and gas industry experience and has significant reservoir engineering, production technology and operations experience in multiple basins worldwide with a variety of International Operators and Consulting firms. He has previously held roles in Santos (Australia/Houston), Halliburton Consulting (Russia), Wintershall (Norway) and Apache (Egypt). Mr Mackintosh has sufficient experience that is relevant to Armour Energy Limited and Lakes Blue Energy NL for reserves and resources to qualify as a Reserves and Resources Evaluator as defined in the ASX Listing Rules.

Wombat and Trifon / Gangell Gas Fields

Source of Contingent Resources estimate: "Technical GIIP and EUR Estimate Update Post Wombat #4: Wombat Field", June 2010, Gaffney, Cline and Associates.

Source of Wombat-5 gas production potential: "Production Forecast for the Proposed Lakes Oil Wombat 5", September 2013, Stimulation Petrophysics Consulting LLC.

Otway-1

Eumeralla: In-house estimate prepared by Mr Tim O'Brien, MSc in Geology and Geophysics, member of PESA, SPE and AAPG.

Waarre and Pebble Point: probabilistic estimate independently prepared by Dr Greg Blackburn, BSc (hons), PhD, Terratek Petroleum Consultants Pty Ltd, February 2011

Portland Energy Project

From "Estimated Unconventional Gas Potential for a Defined Prospect Area in PEP 175, Otway Basin, Victoria", May 2015, SRK Consulting (Australasia) Pty Ltd.

Sources of Resource Estimates

Buna Prospect, PPL 560, PNG

Source of estimate: "Undiscovered Hydrocarbon Resources, Petroleum Prospecting Licence (PPL) Blocks 257 and 258, Papua New Guinea", 31 August 2010, Fekete Associates Inc.

Arrowie Basin

In-house volumetric estimate prepared by Mr Nick Mather, BSc (Hons Geology), member Australian Institute of Mining and Metallurgy.

Overriding Qualifications, applicable to all estimates

The Company is not aware of any new information or data that materially affects the information included in this presentation and confirms that all the material assumptions and technical parameters underpinning the estimates in this presentation continue to apply and have not materially changed.

The estimated quantities of petroleum that may potentially be recovered by the application of a future development project(s) relate to undiscovered accumulations. These estimates have both an associated risk of discovery and a risk of development. Further exploration appraisal and evaluation is required to determine the existence of a significant quantity of potentially moveable hydrocarbons.